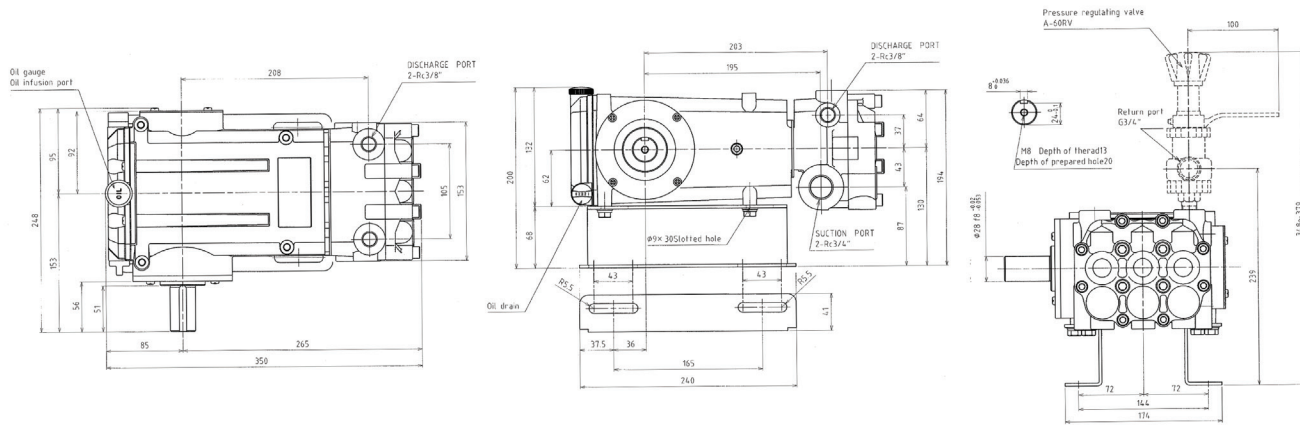


ARIMITSU

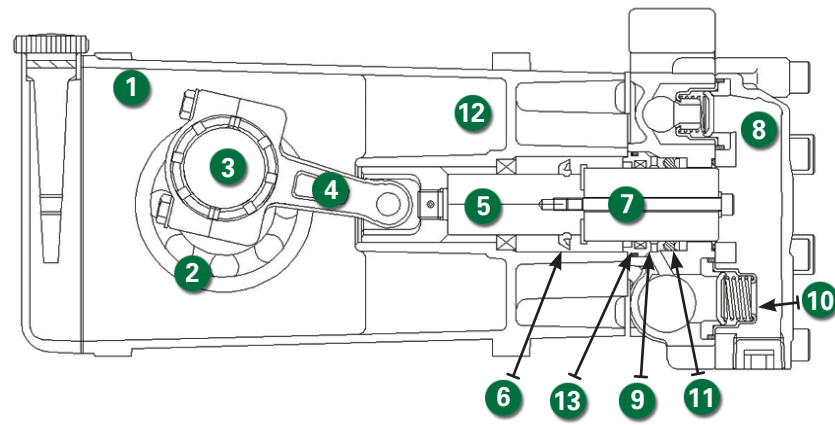
PROVEN PLUNGER PUMPS

DIMENSIONS (mm/in.)



CUTAWAY

- 1 High strength, lightweight die cast crankcase
- 2 Oversized crankshaft bearings for long life and quiet operation
- 3 Forged crankshaft is machined for low friction, quiet operation and high efficiency
- 4 High strength connecting rods are tolerance matched for extended life and low friction operation
- 5 High polish stainless steel plunger rods for smooth operation and even wear
- 6 Zero clearance, polymer exclusionary seal protects pump crankcase from fluid entry and will not corrode
- 7 Proprietary blend, solid ceramic plungers for long wear and increased thermal shock resistance
- 8 Forged brass manifolds for strength and corrosion resistance, machined to optimize fluid flow and performance while extending useful life
- 9 Liquid-cooled, low drag seals provide long life, extended run-dry ability and increased suction lift
- 10 100% stainless steel valve construction provides superior protection against chemical and temperature damage
- 11 Mechanically-loaded seals require no adjustment and self-compensate for wear
- 12 Balanced flow crankcase ensures lubrication and quiet operation
- 13 Slide-in seal cases mean no special tools are required, making seal replacement easy

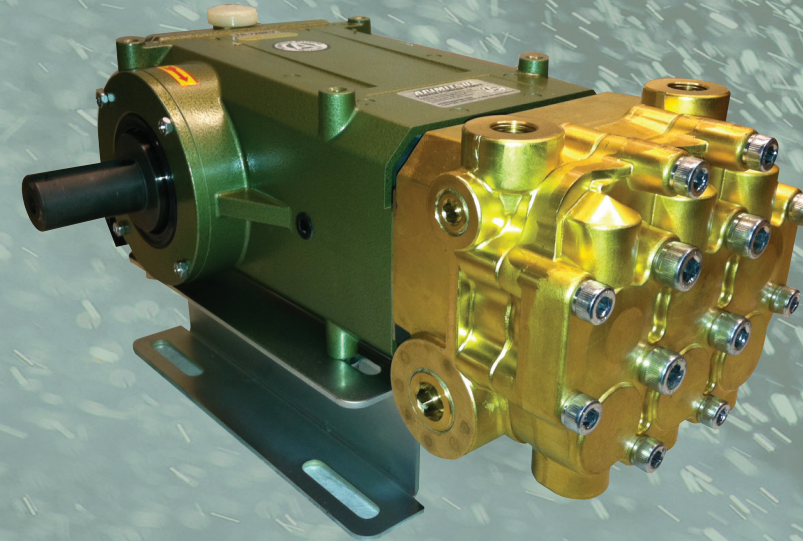


ARIMITSU

PROVEN PLUNGER PUMPS

7 Series

Model TR-720KV



FEATURES

- Triplex plunger pumps provide smooth liquid flow
- Liquid cooled, low drag seals provide long life, improved suction, higher efficiency and longer dry running without damage
- Balanced flow crankcase design and precision machining ensures uniform lubrication and quiet operation
- Manifold is designed and machined to guarantee superior fluid flow
- Zero-clearance exclusionary seals protect crankcase

QUALITY

- 100% stainless steel valve assemblies deliver greater temperature and chemical handling abilities
- Precision ground ceramic plungers utilize a proprietary material blend for long life and increased thermal shock resistance
- Forged brass manifolds offer strength and corrosion resistance
- Proprietary, proven seal blend maximizes life and increases maintenance intervals
- Oversized crankshaft bearings for long life and quiet operation

MAINTENANCE

- No special tools required for repair or maintenance
- Fluid end is easily serviced without entering crankcase
- Easy access seal case and valve assemblies
- Seals require no adjustment

SPECIFICATIONS

TR-720KV	US	METRIC
Flow	6.5 gpm	25 lpm
Pressure	3000 psi	210 bar
RPM	850	850
Inlet Pressure	-5 to 70 psi	0-5 bar
Inlet	1/2"	1/2"
Outlet	3/8"	3/8"
Oil requirement	37 oz.	1.1 L
Shaft Dia.	1.102"	28mm
Max Liquid Temp.	175°F	80°C
Shaft Location	L or R	L or R
Weight	33 lbs.	15 kg

Determining Pump RPM	Rated GPM ----- Rated RPM	=	"Desired" GPM ----- "Desired" RPM
Determining Required HP	GPM x PSI ----- 1500	=	Electric Brake H.P. Required
Determining Motor Pulley Size	Motor Pulley OD ----- Pump RPM	=	Pump Pulley OD ----- Motor RPM



Arimitsu of North America, Inc.
700 McKinley St.
Anoka, MN 55303
ph: 612.219.7522
fax: 763.433.0404
www.arimitsupumps.com



Manufactured by Arimitsu Industry Co., Ltd., of Osaka, Japan, a leading supplier of Industrial plunger pumps and systems used by Industrial leaders throughout the World.

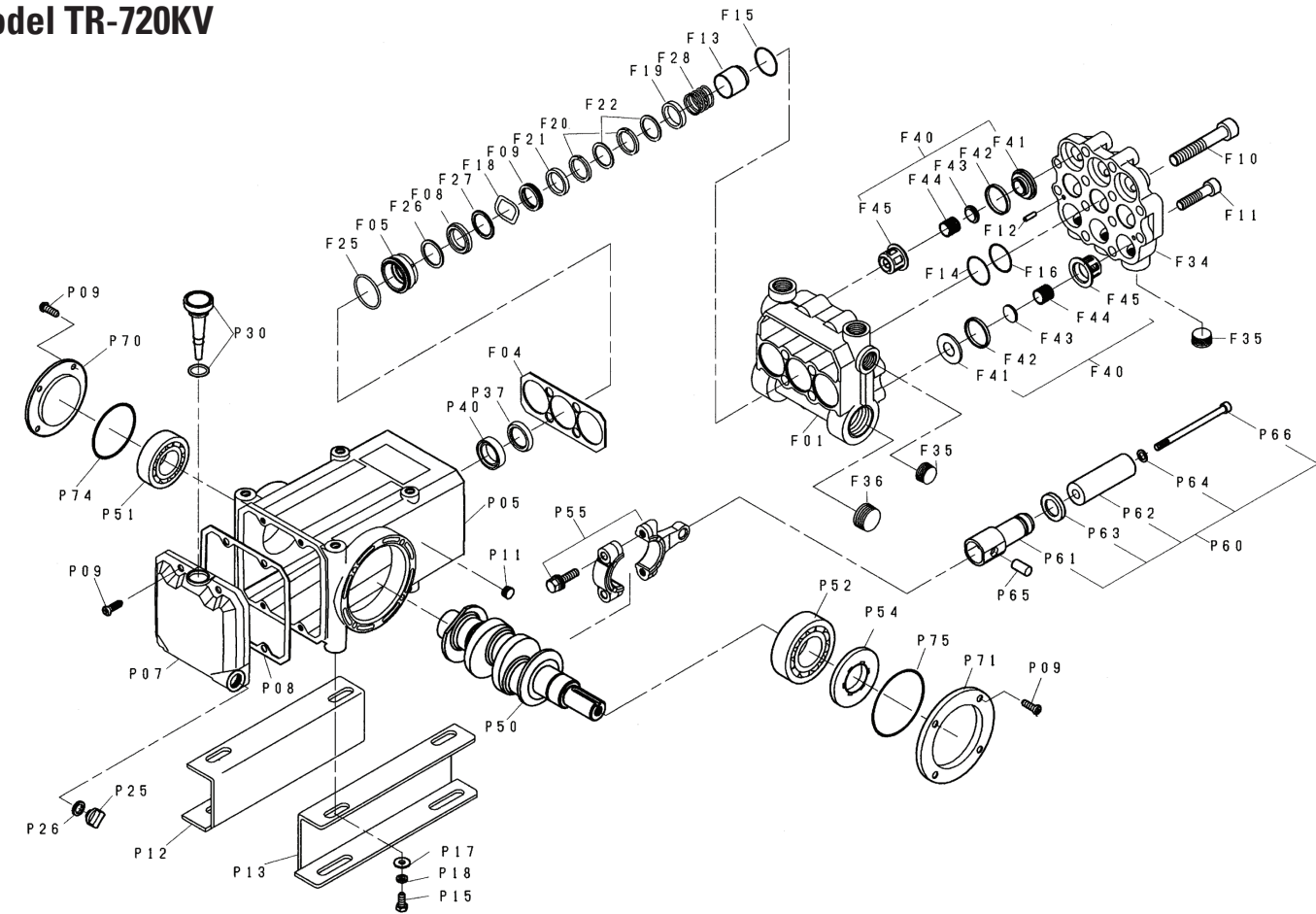
Rev.2, Model TR-720KV, 12-22

Parts List

REF. #	PART NUMBER	PART NAME	MATERIAL	QTY
F01	0382001010	MANIFOLD, PORTED	BRASS	1
F04	0381001250	SPACER	STAINLESS STEEL	1
F05	0382001200	SEAL RETAINER	BRASS	3
F08	A3078	LOW PRESSURE PACKING	NBR/TEXTILE	3
F09	0382001260	PACKING ADAPTER	BRASS	3
F10	A3058	MANIFOLD BOLT, LONG	PLATED STEEL	4
F11	A3236	MANIFOLD BOLT, SHORT	PLATED STEEL	8
F12	A3354	DOWEL PIN	STEEL	2
F13	0382001300	STUFFING BOX	STAINLESS STEEL	3
F14	0382003205	BACKUP RING	PTFE TEFLON	3
F15	A3253	O-RING, STUFFING BOX	NBR	3
F16	9203F15032	O-RING, MANIFOLD	NBR	3
F18	A3269	WAVE WASHER	STAINLESS STEEL	3
F19	0382001430	MALE ADAPTER	BRASS	3
F20	A3239	HIGH PRESSURE GLAND PACKING	ARAMIDE	6
F21	A3255	PACKING ADAPTER	PTFE + CG	3
F22	A3238	GLAND PACKING ADAPTER	PTFE + CG	6
F25	A3252	O-RING, SEAL RETAINER	NBR	3
F26	A3254	ADAPTER, SEAL RETAINER	PTFE + CG	3
F27	0363501430	MALE ADAPTER	BRASS	3
F28	A3301	SPRING	STAINLESS STEEL	3
F34	0382003200	MANIFOLD, VALVES	BRASS	1
F35	A3351	PLUG, 3/8	BRASS	4
F36	0186513950	PLUG, 3/4	BRASS	1
F40	A3177	VALVE ASSEMBLY	STAINLESS STEEL	6
F41		SEAT	STAINLESS	6
F42	A3146	VALVE GASKET	NBR	6
F43		DISC	STAINLESS STEEL	6
F44		SPRING	STAINLESS STEEL	6
F45		RETAINER, CAGE	STAINLESS STEEL	6
P05	0380022010	CRANKCASE	ALUMINUM	1
P07	0380002040	BACK COVER	ALUMINUM	1
P08	A3368	GASKET	BONDED PAPER	1
P09	A3228	SCREW, PHILLIPS	PLATED STEEL	12
P11	9313A10800	PLUG	CARBON STEEL	1
P12	0270102200	BRACKET	STEEL	1
P13	0270102210	BRACKET	STEEL	1
P15	9101B08018	BOLT	CARBON STEEL	4
P17	A3370	WASHER	STEEL	4
P18	A3371	SPRING WASHER	STEEL	4
P25	A3356	DRAIN PLUG	POLYAMIDE	2
P26	A3343	GASKET	NBR	2
P30	02701026001	OIL GAUGE, DIPSTICK	POLYAMIDE, NBR	1
P37	A3372	SLINGER	NBR	3
P40	A3274	OIL SEAL	NBR	3
P50	A3373	CRANKSHAFT	STEEL	1
P51	A3374	BEARING	STEEL	1
P52	A3375	BEARING	STEEL	1
P54	A3207	OIL SEAL, SHAFT	NBR	1
P55	A3376	CONNECTING ROD ASSEMBLY	ALUMINUM/STEEL	3
P60		PLUNGER ASSEMBLY		3
P61	0366004860	PLUNGER ROD	STAINLESS STEEL	3
P62	03820048S0	PLUNGER	CERAMIC	3
P63	0382004830	SPACER	BRASS	3
P64	A3264	GASKET	COPPER	3
P65	A3378	PLUNGER PIN	STEEL	3
P66	9120R05095	BOLT, PLUNGER	STAINLESS STEEL	3
P70	A3380	BEARING COVER, BLIND SIDE	STEEL	1
P71	0380004430	BEARING COVER, SHAFT SIDE	ALUMINUM	1
P74	A3057	O-RING, COVER	NBR	1
P75	A3104	O-RING, COVER	NBR	1

Exploded View

Model TR-720KV



REF. #	PART NUMBER	PART NAME	MATERIAL	QTY
	A1007	RAIL SET, 7 SERIES	PLATED STEEL	1
	A1002	VALVE KIT, TR-720KV (F40, F42)	STAINLESS/NBR	2
	A1021	SEAL KIT, TR-720KV (F08, F09, F15, F19, F20, F21, F22, F25, F26, F27)	NBR	1

Horsepower Requirements

	Pressure (psi)						
	RPM	GPM	LPM	1500	2000	2500	3000
TR-720KV	725	5.5	21.0	5.5	7.3	9.2	11.0
	850	6.5	25.0	6.5	8.6	10.8	13.0
	900	7.0	26.5	7.0	9.3	11.6	

* Material listed may be a proprietary version. Parts names without part numbers are only available within complete assemblies.

* Material codes: FP=Fluoropolymer, NBR=Medium Nitrile (Buna-N), CFR=Foam Rubber
STAINLESS=Stainless Steel (300 Series)