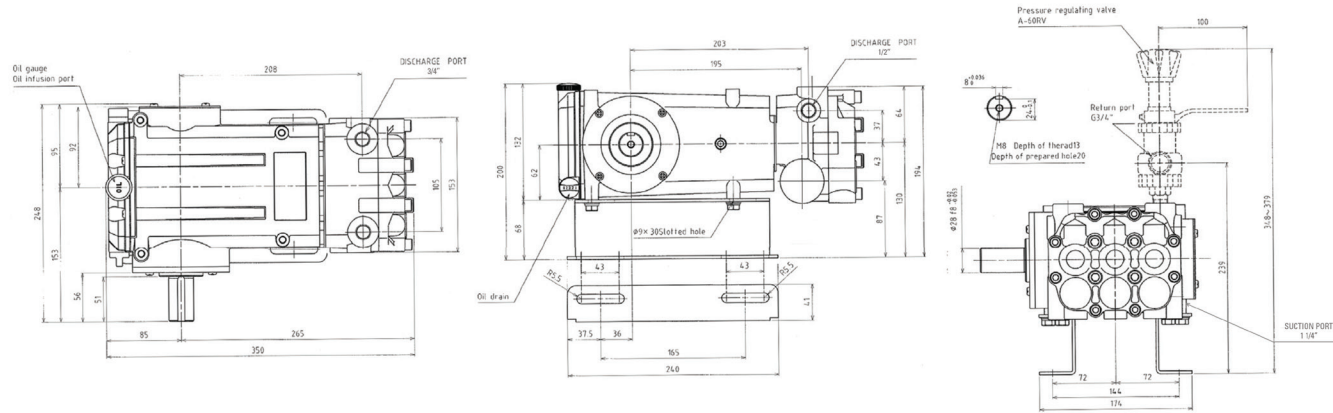


# ARIMITSU

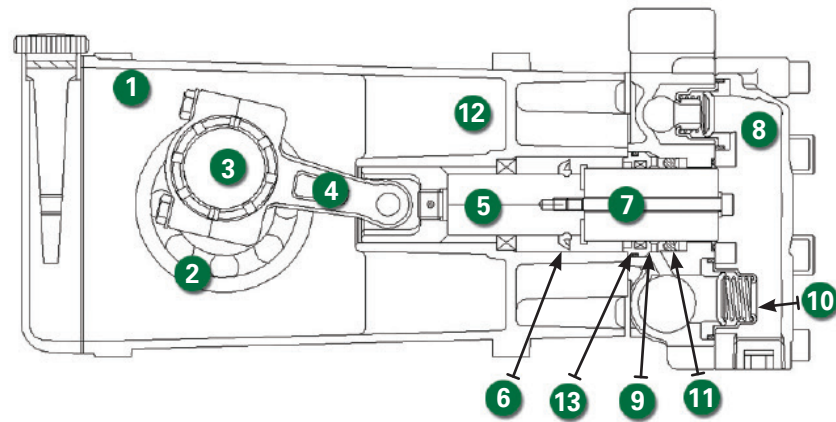
## PROVEN PLUNGER PUMPS

### DIMENSIONS (mm/in.)



### CUTAWAY

- 1 High strength, lightweight die cast crankcase
- 2 Oversized crankshaft bearings for long life and quiet operation
- 3 Forged crankshaft is machined for low friction, quiet operation and high efficiency
- 4 High strength connecting rods are tolerance matched for extended life and low friction operation
- 5 High polish stainless steel plunger rods for smooth operation and even wear
- 6 Zero clearance, polymer exclusionary seal protects pump crankcase from fluid entry and will not corrode
- 7 Proprietary blend, solid ceramic plungers for long wear and increased thermal shock resistance
- 8 Forged brass manifolds for strength and corrosion resistance, machined to optimize fluid flow and performance while extending useful life
- 9 Liquid-cooled, low drag seals provide long life, extended run-dry ability and increased suction lift
- 10 100% stainless steel valve construction provides superior protection against chemical and temperature damage
- 11 Mechanically-loaded seals require no adjustment and self-compensate for wear
- 12 Balanced flow crankcase ensures lubrication and quiet operation
- 13 Slide-in seal cases mean no special tools are required, making seal replacement easy



Arimitsu of North America, Inc.  
 700 McKinley St.  
 Anoka, MN 55303  
 ph: 612.219.7522  
 fax: 763.433.0404  
 www.arimitsupumps.com

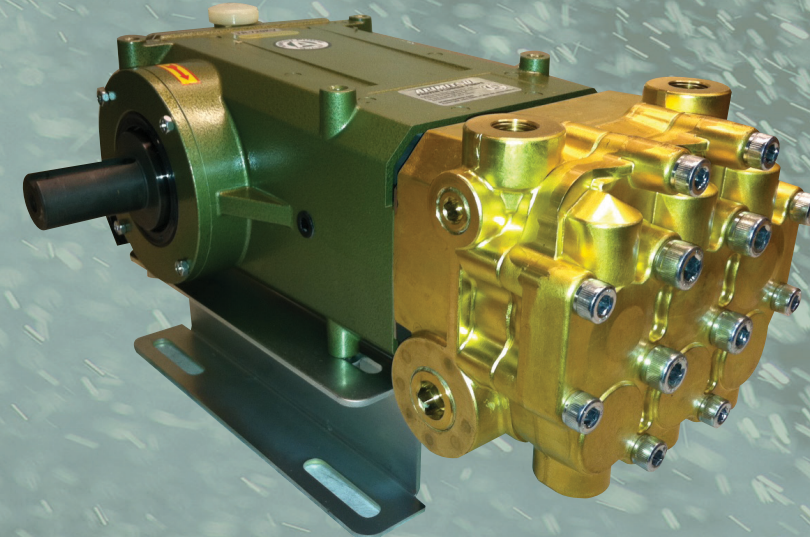
Manufactured by Arimitsu Industry Co, Ltd., of Osaka, Japan, a leading supplier of Industrial plunger pumps and systems used by Industrial leaders throughout the World.



Rev.2, Model TR-709KV, 12-22

# ARIMITSU

## PROVEN PLUNGER PUMPS



# 7 Series

## Model TR-709KV

### FEATURES

- Triplex plunger pumps provide smooth liquid flow
- Liquid cooled, low drag seals provide long life, improved suction, higher efficiency and longer dry running without damage
- Balanced flow crankcase design and precision machining ensures uniform lubrication and quiet operation
- Manifold is designed and machined to guarantee superior fluid flow
- Zero-clearance exclusionary seals protect crankcase

### QUALITY

- 100% stainless steel valve assemblies deliver greater temperature and chemical handling abilities
- Precision ground ceramic plungers utilize a proprietary material blend for long life and increased thermal shock resistance
- Forged brass manifolds offer strength and corrosion resistance
- Proprietary, proven seal blend maximizes life and increases maintenance intervals
- Oversized crankshaft bearings for long life and quiet operation

### MAINTENANCE

- No special tools required for repair or maintenance
- Fluid end is easily serviced without entering crankcase
- Easy access seal case and valve assemblies
- Seals require no adjustment

### SPECIFICATIONS

TR-709KV	US	METRIC
Flow	15 gpm	57 lpm
Pressure	1200 psi	83 bar
RPM	850	850
Inlet Pressure	-5 to 70 psi	0-5 bar
Inlet	1-1/4"	1-1/4"
Outlet	1/2" & 3/4"	1/2" & 3/4"
Oil requirement	37 oz.	1.1 L
Shaft Dia.	1.102"	28mm
Max Liquid Temp.	175°F	80°C
Shaft Location	L or R	L or R
Weight	37 lbs.	17 kg

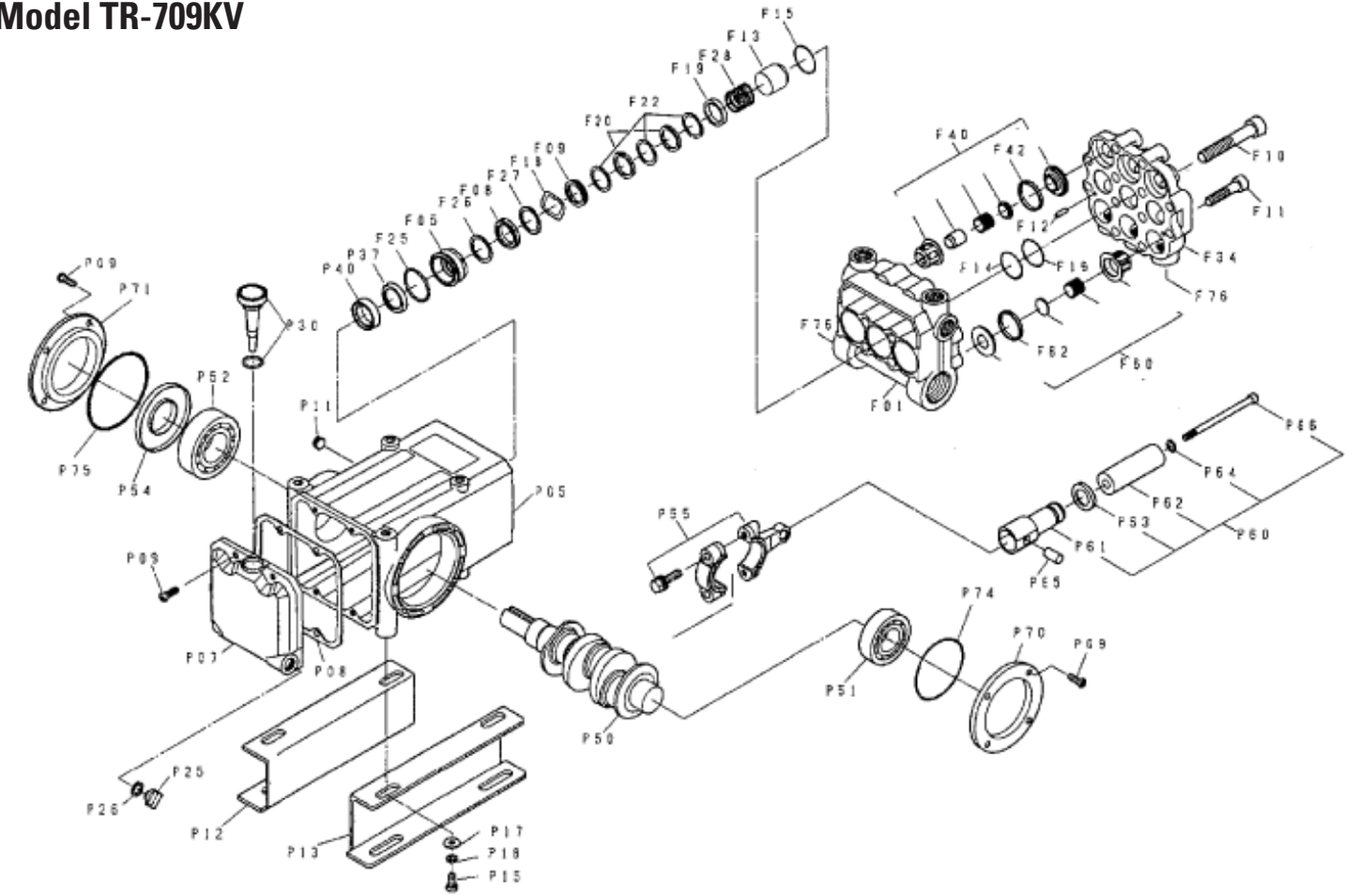
Determining Pump RPM	Rated GPM ----- Rated RPM	=	"Desired" GPM ----- "Desired" RPM
Determining Required HP	GPM x PSI ----- 1500	=	Electric Brake H.P. Required
Determining Motor Pulley Size	Motor Pulley OD ----- Pump RPM	=	Pump Pulley OD ----- Motor RPM

## Parts List

## Exploded View

REF. #	PART NUMBER	PART NAME	MATERIAL	QTY
F01	0380011010	MANIFOLD, PORTED	BRASS	1
F05	0380001200	SEAL RETAINER	BRASS	3
F08	A3242	LOW PRESSURE PACKING	NBR/TEXTILE	3
F09	0380001260	PACKING ADAPTER	BRASS	3
F10	A3058	MANIFOLD BOLT, LONG	PLATED STEEL	4
F11	A3236	MANIFOLD BOLT, SHORT	PLATED STEEL	8
F12	A3354	DOWEL PIN	STEEL	2
F13	0380001300	STUFFING BOX	STAINLESS STEEL	3
F14	0380003205	BACKUP RING	PTFE TEFLON	3
F15	A3253	O-RING, STUFFING BOX	NBR	3
F16	9203F15038	O-RING, MANIFOLD	NBR	3
F18	0380001460	WAVE WASHER	STAINLESS STEEL	3
F19	0380001430	MALE ADAPTER	BRASS	3
F20	03800014Y0	HIGH PRESSURE GLAND PACKING	ARAMIDE	6
F22	0380001272	GLAND PACKING ADAPTER	PTFE + CG	9
F25	A3252	O-RING, SEAL RETAINER	NBR	3
F26	0380001280	ADAPTER, SEAL RETAINER	PTFE + CG	3
F27	0363501430	MALE ADAPTER	BRASS	3
F28	A3301	SPRING	STAINLESS STEEL	3
F34	0380003200	MANIFOLD, VALVES	BRASS	1
F35	0040003940	PLUG	BRASS	3
F40	0366623300	VALVE ASSEMBLY, OUTLET	STAINLESS STEEL	3
F41		SEAT	STAINLESS	3
F42	A3222	VALVE GASKET	NBR	3
F43		DISC	STAINLESS STEEL	3
F44		SPRING	STAINLESS STEEL	3
F45		RETAINER, CAGE	STAINLESS STEEL	3
F46		GUIDE	STAINLESS STEEL	3
F60	A3167	VALVE ASSEMBLY, INLET	STAINLESS STEEL	3
F61		SEAT	STAINLESS STEEL	3
F62	0361003840	VALVE GASKET	NBR	3
F63		DISC	STAINLESS STEEL	3
F64		SPRING	STAINLESS STEEL	3
F65		RETAINER, CAGE	STAINLESS STEEL	3
P05	0380002010	CRANKCASE	ALUMINUM	1
P07	0380002040	BACK COVER	ALUMINUM	1
P08	A3368	GASKET	BONDED PAPER	1
P09	A3228	SCREW, PHILLIPS	PLATED STEEL	12
P11	9313A10800	PLUG	CARBON STEEL	1
P12	0270102200	BRACKET	STEEL	1
P13	0270102210	BRACKET	STEEL	1
P15	9101B08018	BOLT	CARBON STEEL	4
P17	A3370	WASHER	STEEL	4
P18	A3371	SPRING WASHER	STEEL	4
P25	A3356	DRAIN PLUG	POLYAMIDE	2
P26	A3343	GASKET	NBR	2
P30	02701026001	OIL GAUGE, DIPSTICK	POLYAMIDE, NBR	1
P37	A3372	SLINGER	NBR	3
P40	A3274	OIL SEAL	NBR	3
P50	A3373	CRANKSHAFT	STEEL	1
P51	A3374	BEARING	STEEL	1
P52	A3375	BEARING	STEEL	1
P54	A3207	OIL SEAL, SHAFT	NBR	1
P55	A3376	CONNECTING ROD ASSEMBLY	ALUMINUM/STEEL	3
P60	03800047SO	PLUNGER ASSEMBLY		3
P61	0366004860	PLUNGER ROD	STAINLESS STEEL	3
P62	03800048S0	PLUNGER	CERAMIC	3
P63	0380004850	SPACER	BRASS	3
P64	A3264	GASKET	COPPER	3
P65	A3378	PLUNGER PIN	STEEL	3
P66	9120R05095	BOLT, PLUNGER	STAINLESS STEEL	3
P70	A3380	BEARING COVER, BLIND SIDE	STEEL	1
P71	0380004430	BEARING COVER, SHAFT SIDE	ALUMINUM	1
P74	A3057	O-RING, COVER	NBR	1
P75	A3104	O-RING, COVER	NBR	1

## Model TR-709KV



REF. #	PART NUMBER	PART NAME	MATERIAL	QTY
	A1007	RAIL SET, 7 SERIES	PLATED STEEL	1
	A1005	INLET VALVE KIT, TR-709KV (F60)	STAINLESS/NBR	1
	A1020	OUTLET VALVE KIT, TR-709KV (F40)	STAINLESS/NBR	1
	30146	SEAL KIT, TR-709KV (F08, F09, F15, F19, F20, F21, F22, F25, F26, F27)	NBR/PTFE + CG	1

TR-709KV	Horsepower Requirements			Pressure (psi)				
	RPM	GPM	LPM	800	900	1000	1100	1300
	760	12.5	48.4	6.9	7.7	8.6	9.4	11.1
920	15.0	58.5	8.2	9.2	10.3	11.3		
1050	17.1	66.8	9.4	10.6				

\* Material listed may be a proprietary version. Parts names without part numbers are only available within complete assemblies.

\* Material codes: FP=Fluoropolymer, NBR=Medium Nitrile (Buna-N), CFR=Foam Rubber, STAINLESS=Stainless Steel (300 Series)