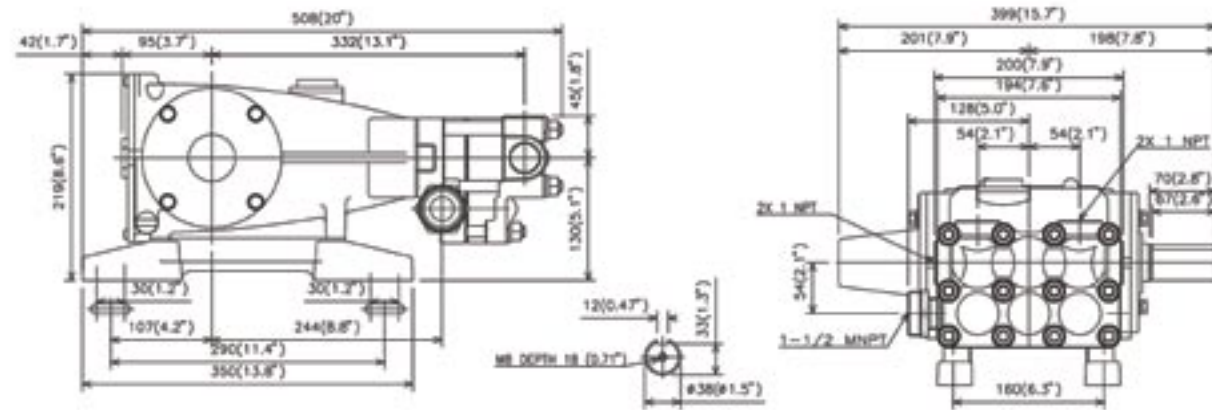
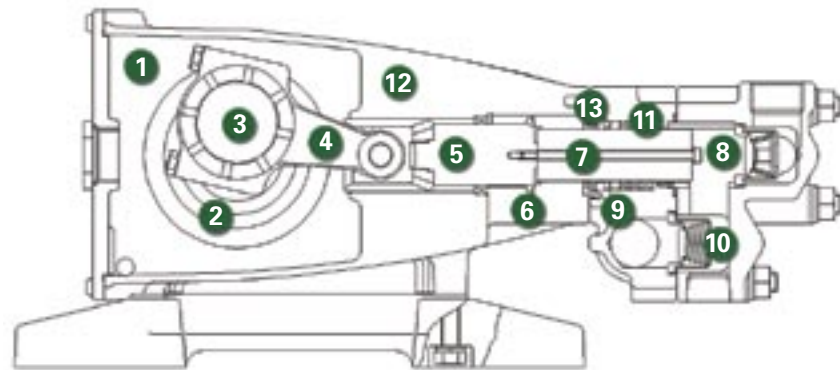


DIMENSIONS (mm/in.)



CUTAWAY

- 1 High strength, lightweight die cast crankcase
- 2 Oversized crankshaft bearings for long life and quiet operation
- 3 Crankshaft is machined for low friction, quiet operation and high efficiency
- 4 High strength connecting rods are tolerance matched for extended life and low friction operation
- 5 High polish stainless steel plunger rods for smooth operation and even wear
- 6 Zero clearance, polymer exclusionary seal protects pump crankcase from fluid entry and will not corrode
- 7 Proprietary blend, solid ceramic plungers for long wear and increased thermal shock resistance
- 8 Forged brass manifolds for strength and corrosion resistance, machined to optimize fluid flow and performance while extending useful life
- 9 Liquid-cooled, low drag seals provide long life, extended run-dry ability and increased suction lift
- 10 100% stainless steel valve construction provides superior protection against chemical and temperature damage
- 11 Industrial, continuous-duty seal design for superior life and expanded fluid handling abilities
- 12 Balanced flow crankcase ensures lubrication and quiet operation
- 13 Slide-in seal cases mean no special tools are required, making seal replacement easy



Arimitsu of North America, Inc.
700 McKinley St.
Anoka, MN 55303
ph: 612.219.7522
fax: 763.433.0404
www.arimitsupumps.com

Manufactured by Arimitsu Industry Co., Ltd., of Osaka, Japan, a leading supplier of Industrial plunger pumps and systems used by Industrial leaders throughout the World.



Rev.2, Model 1105, (12-22)
Part #. 112



11 Series

Model 1105

FEATURES

- Triplex pumps provide smooth liquid flow
- Liquid cooled, low drag seals provide long life, improved suction, higher efficiency and longer dry running without damage
- Balanced flow crankcase design and precision machining ensures uniform lubrication and quiet operation
- Manifold is designed and machined to guarantee superior fluid flow
- Zero-clearance exclusionary seals protect crankcase

QUALITY

- 100% stainless steel valve assemblies deliver greater temperature and chemical handling abilities
- Precision ground ceramic plungers utilize a proprietary material blend for long life and increased thermal shock resistance
- Forged brass manifolds offer strength and corrosion resistance
- Proprietary, proven seal blend maximizes life and increases maintenance intervals
- Oversized crankshaft bearings for long life and quiet operation

MAINTENANCE

- No special tools required for repair or maintenance
- Fluid end is easily serviced without entering crankcase
- Seals require no adjustment

SPECIFICATIONS

Model 1105	US	METRIC
Flow	32 gpm	120 lpm
Pressure	750 psi	50 bar
RPM	900	900
Inlet Pressure	-5 to 70 psi	0 to 5 bar
Inlet	1-1/2" M	1-1/2" M
Outlet	1"	1"
Oil requirement	60 oz.	1.8 L
Shaft Dia.	1.5"	38 mm
Max Liquid Temp.	175°F	80°C
Shaft Location	both sides	both sides
Weight	81 lbs.	37 kg

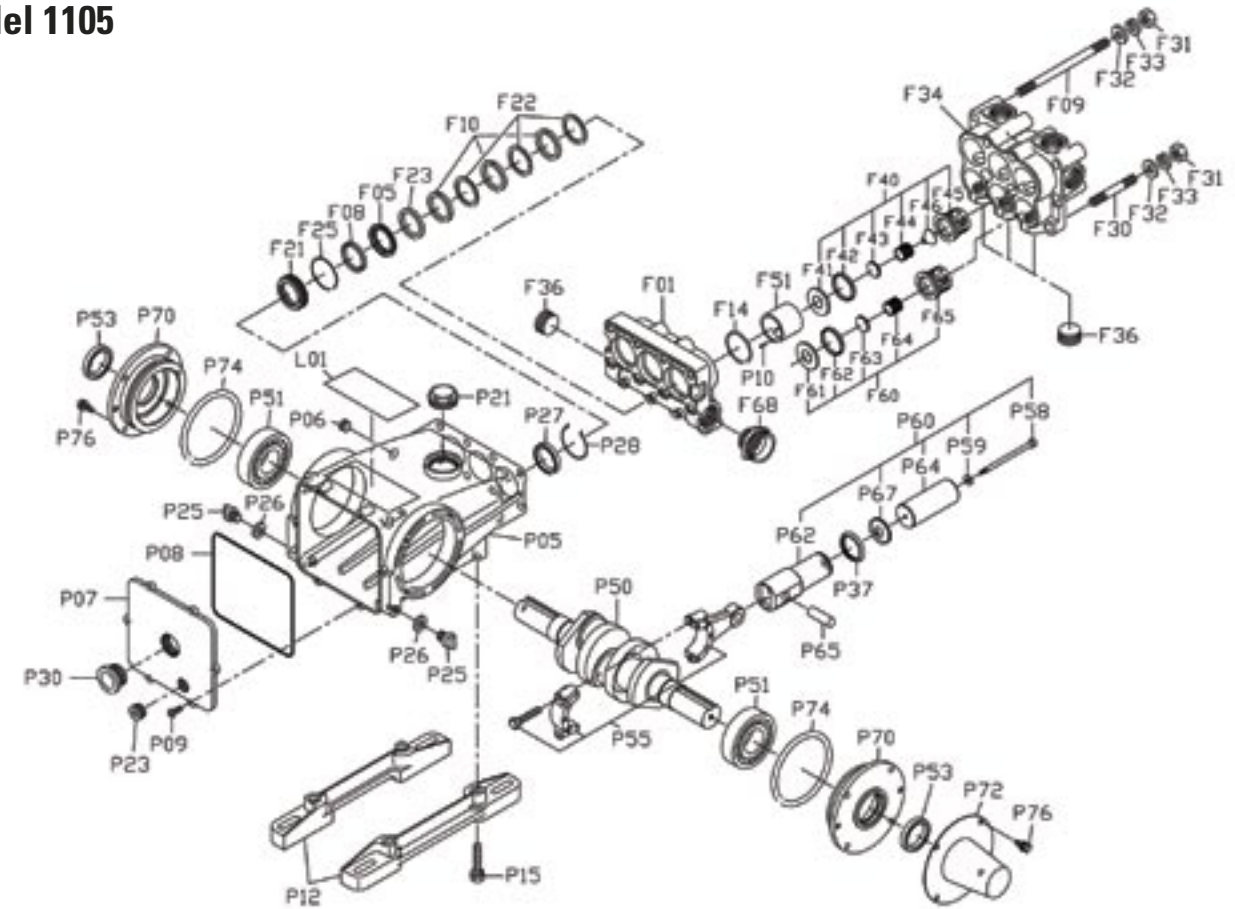
$$\frac{\text{Determining Pump RPM}}{\text{Rated RPM}} = \frac{\text{Rated GPM}}{\text{"Desired" GPM}}$$

$$\frac{\text{Determining Required HP}}{1460} = \frac{\text{GPM x PSI}}{\text{Electric Brake H.P. Required}}$$

$$\frac{\text{Determining Motor Pulley Size}}{\text{Pump RPM}} = \frac{\text{Motor Pulley OD}}{\text{Pump Pulley OD}}$$

REF. #	PART NUMBER	PART NAME	MATERIAL	QTY
F01	0440001010	MANIFOLD, INLET	BRASS	1
F05	0440001200	SEAL RETAINER	BRASS	3
F08	04400014K0	VACUUM SEAL	NBR	3
F09	0440001100	STUD BOLT	PLATED STEEL	8
F10	A3257	SEAL, PACKING	FPF	9
F14	0440001400	O-RING, MANIFOLD	NBR	3
F21	0440001260	SEAL HOLDER	BRASS	3
F22	0440001270	SPACER, SEAL	FP	9
F23	0440001272	SEAL SUPPORT	FP	3
F25	A3171	O-RING	NBR	3
F30	0440001140	STUD BOLT	PLATED STEEL	4
F31	9140B12000	HEX NUT	PLATED STEEL	12
F32	9162B12000	WASHER	PLATED STEEL	12
F33	9163F12000	LOCK WASHER	PLATED STEEL	12
F34	0440003200	MANIFOLD, DISCHARGE	BRASS	1
F36	0440003940	PLUG	BRASS	1
F40	0440003300	VALVE ASSEMBLY, DISCHARGE		3
F41	0440003320	SEAT	STAINLESS	3
F42	0440003340	GASKET,VALVE	NBR	3
F43	0440003350	DISC	STAINLESS	3
F44	0440003370	SPRING	STAINLESS	3
F45	0440003380	CAGE	STAINLESS	3
F46	0440003390	GUIDE	BRASS	3
F51	0440003420	SLEEVE	BRASS	3
F60	0440003800	VALVE ASSEMBLY, INLET		3
F61	0440003320	SEAT	STAINLESS	3
F62	0440003340	GASKET	NBR	3
F63	0440003350	DISC	STAINLESS	3
F64	0440003370	SPRING	STAINLESS	3
F65	0440003380	CAGE	STAINLESS	3
F68	0440003910	INLET FITTING	BRASS	1
P05	0440002010	CRANKCASE	ALUMINUM	1
P06	9313A11000	PLUG	STEEL	1
P07	0440002040	BACK COVER	ALUMINUM	1
P08	0440002050	GASKET	NBR	1
P09	9130B06020	SCREW	PLATED STEEL	6
P10	0440001110	DOWEL PIN	STAINLESS	3
P12	0440002200	MOUNTING FEET	ALUMINUM	2
P15	9106B10055	BOLT	STEEL	4
P21	A3073	OIL CAP	FP	1
P23	9313A11500	PLUG	STEEL	1
P25	A3356	DRAIN PLUG	FP	2
P26	A3343	PLUG GASKET	NBR	2
P27	A3060	OIL SEAL	NBR	3
P28	A3061	RETAINER	STAINLESS	3
P30	0440002600	SIGHT GLASS	FP	1
P37	A3059	EXCLUSION SEAL	NBR	3
P50	0440004010	CRANKSHAFT	STEEL	1
P51	0440004020	BEARING	STEEL	2
P53	A3395	OIL SEAL, BEARING	NBR	2
P55	0440004600	CON-ROD ASSEMBLY	ALUMINUM	3
P60	04400047S0	PLUNGER ASSEMBLY		3
P58	9120R05105	BOLT	STAINLESS	3
P59	A3264	GASKET	COPPER	3
P62	A3138	GUIDE ROD ASSEMBLY	STEEL/STAINLESS	3
P64	04400048S0	PLUNGER	CERAMIC	3
P65	04000049001	PLUNGER PIN	STEEL	3
P67	0440004850	SPACER	BRASS	3
P70	0440004400	BEARING COVER	ALUMINUM	2
P72	0400004430	SHAFT COVER	PLATED STEEL	1
P74	9201B50105	O-RING	NBR	2
P76	9106B08025	BOLT	STEEL	8

Model 1105



12/05

REF. #	PART NUMBER	PART NAME	MATERIAL	QTY
	A1016	SEAL KIT, 1105 (INCLUDES F08, F10, F22, F23, F25)	FP/FPF	1
	30123	VALVE KIT, INLET (F60)	STAINLESS	1
	30124	VALVE KIT, OUTLET (F40)	STAINLESS	1
	A8037	OIL, BOTTLE (32 OZ) ISO 100		1
Recommended Accessories				
	70101	110105 REGULATOR, 30 GPM, 1500 PSI	BRONZE/STAINLESS	1

	Horsepower Requirements			Pressure (psi)				
	RPM	GPM	LPM	500	600	750	850	1000
1105	700	24.0	95.3	8.2	9.9	12.3	14.0	16.5
	800	28.0	109.0	9.6	11.5	14.4	16.3	
	900	32.0	122.6	10.9	13.1	16.4		

* Material listed may be a proprietary version. Parts names without part numbers are only available within complete assemblies.

* Material codes: FP=Flouropolymer, NBR=Medium Nitrile (Buna-N), FPF=Flouropolymer Fiber STAINLESS=Stainless Steel (300 Series)