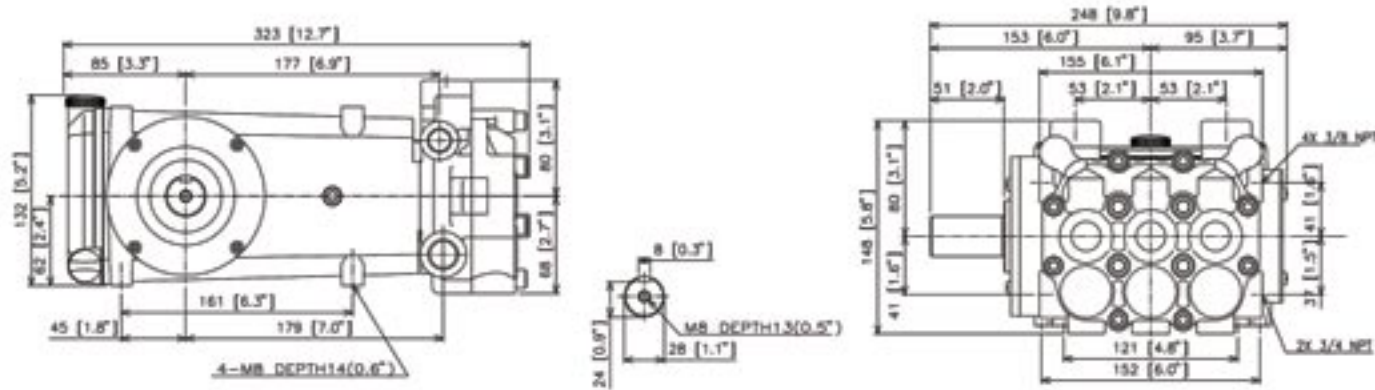
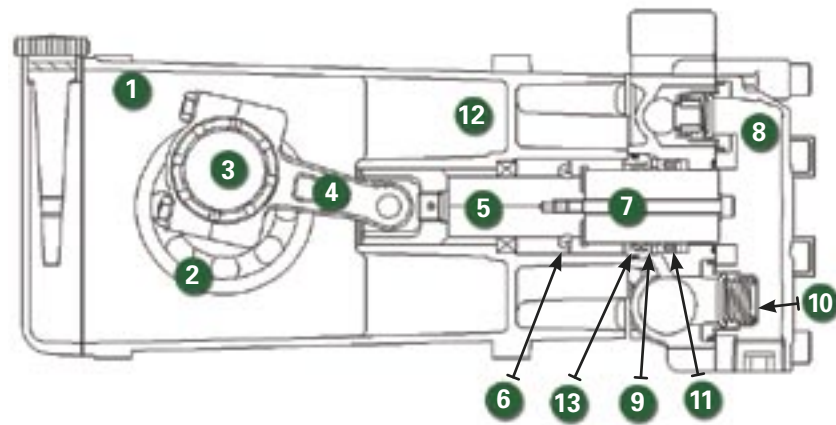


DIMENSIONS (mm/in.)



CUTAWAY

- 1 High strength, lightweight die cast crankcase
- 2 Oversized crankshaft bearings for long life and quiet operation
- 3 Forged crankshaft is machined for low friction, quiet operation and high efficiency
- 4 High strength connecting rods are tolerance matched for extended life and low friction operation
- 5 High polish stainless steel plunger rods for smooth operation and even wear
- 6 Zero clearance, polymer exclusionary seal protects pump crankcase from fluid entry and will not corrode
- 7 Proprietary blend, solid ceramic plungers for long wear and increased thermal shock resistance
- 8 Forged brass manifolds for strength and corrosion resistance, machined to optimize fluid flow and performance while extending useful life
- 9 Liquid-cooled, low drag seals provide long life, extended run-dry ability and increased suction lift
- 10 100% stainless steel valve construction provides superior protection against chemical and temperature damage
- 11 Mechanically-loaded seals require no adjustment and self-compensate for wear
- 12 Balanced flow crankcase ensures lubrication and quiet operation
- 13 Slide-in seal cases mean no special tools are required, making seal replacement easy

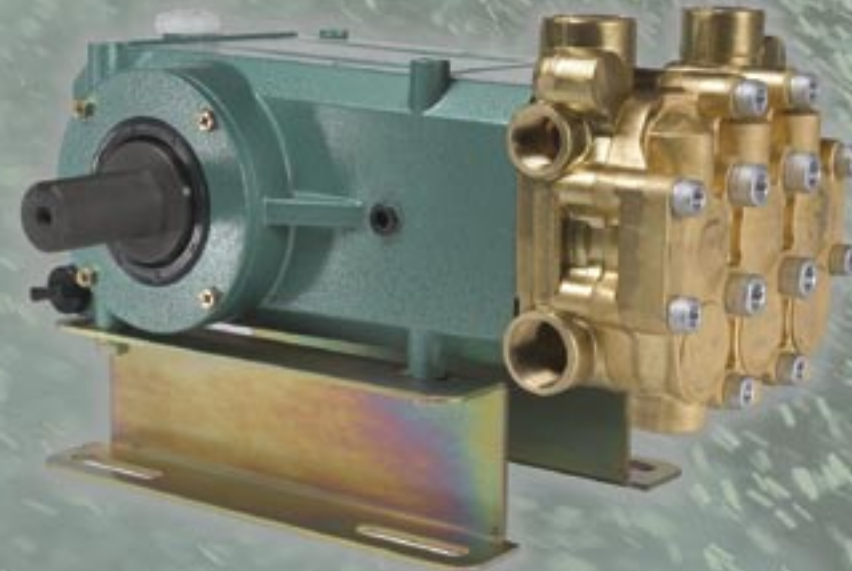


Arimitsu of North America, Inc.
13915-H Radium Street N.W.
Ramsey, MN 55303
ph: 763.433.0303
fax: 763.433.0404
www.arimitsupumps.com

Manufactured by Arimitsu Industry Co., Ltd., of Osaka, Japan, a leading supplier of Industrial plunger pumps and systems used by Industrial leaders throughout the World.



Rev.1, Model 713, (2-06)
Part #. 109



7 Series

Model 713

FEATURES

- Triplex pumps provide smooth liquid flow
- Liquid cooled, low drag seals provide long life, improved suction, higher efficiency and longer dry running without damage
- Balanced flow crankcase design and precision machining ensures uniform lubrication and quiet operation
- Manifold is designed and machined to guarantee superior fluid flow
- Zero-clearance exclusionary seals protect crankcase

QUALITY

- 100% stainless steel valve assemblies deliver greater temperature and chemical handling abilities
- Precision ground ceramic plungers utilize a proprietary material blend for long life and increased thermal shock resistance
- Forged brass manifolds offer strength and corrosion resistance
- Proprietary, proven seal blend maximizes life and increases maintenance intervals
- Oversized crankshaft bearings for long life and quiet operation

MAINTENANCE

- No special tools required for repair or maintenance
- Fluid end is easily serviced without entering crankcase
- Easy access seal case and valve assemblies
- Seals require no adjustment

SPECIFICATIONS

Model 713	US	METRIC
Flow	10 gpm	39 lpm
Pressure	1800 psi	125 bar
RPM	900	900
Inlet Pressure	-5 to 70 psi	0-5 bar
Inlet	3/4"	3/4"
Outlet	1/2" & 3/8"	1/2" & 3/8"
Oil requirement	37 oz.	1.1 L
Shaft Dia.	1.102"	28mm
Max Liquid Temp.	175°F	80°C
Shaft Location	L or R	L or R
Weight	33 lbs.	15 kg

$$\frac{\text{Rated GPM}}{\text{Rated RPM}} = \frac{\text{"Desired" GPM}}{\text{"Desired" RPM}}$$

$$\frac{\text{GPM} \times \text{PSI}}{1460} = \text{Electric Brake H.P. Required}$$

$$\frac{\text{Motor Pulley OD}}{\text{Pump RPM}} = \frac{\text{Pump Pulley OD}}{\text{Motor RPM}}$$

Parts List

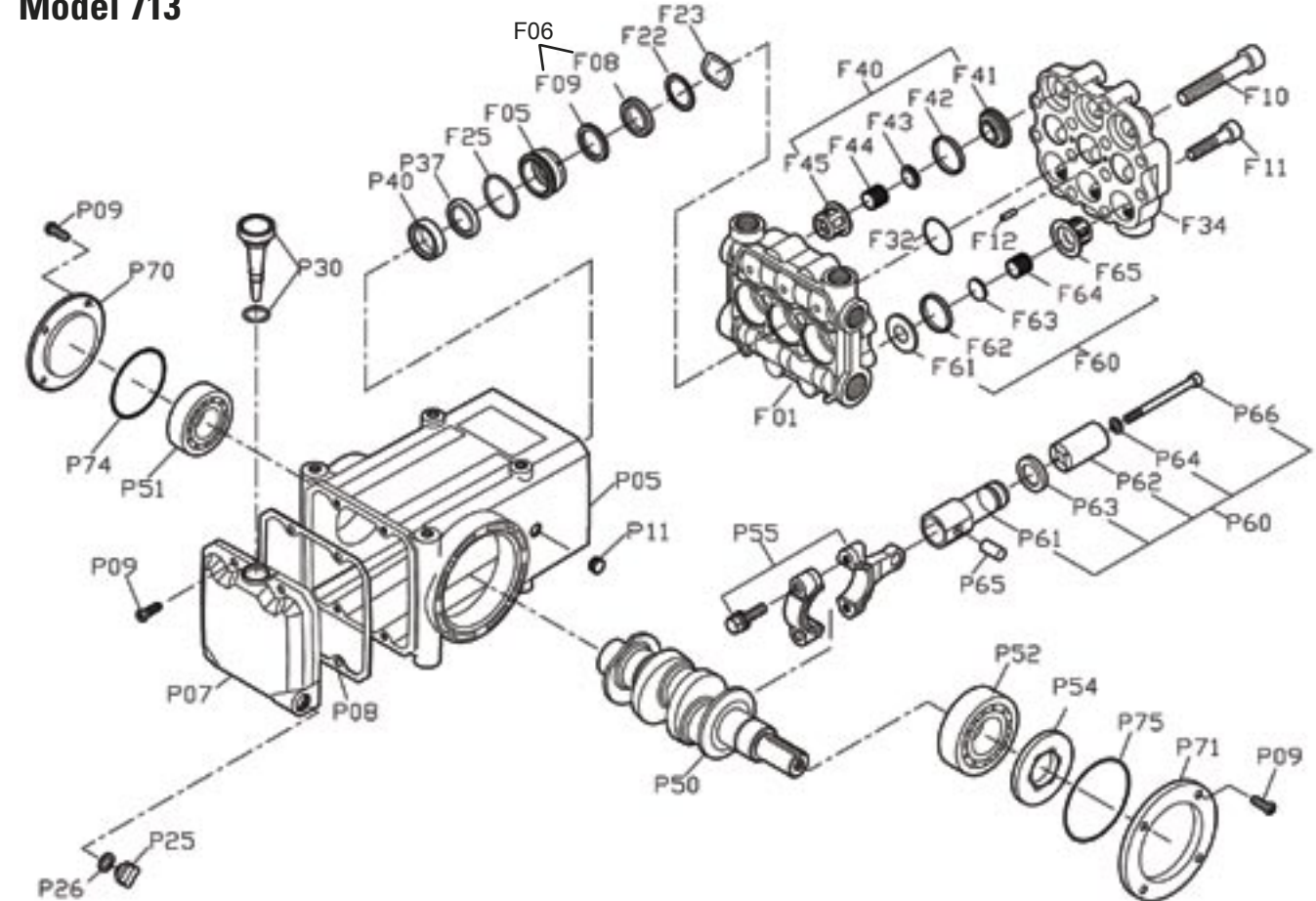
REF. #	PART NUMBER	PART NAME	MATERIAL	QTY
F01	0362001010	MANIFOLD	BRASS	1
F05	0362501200	SEAL RETAINER	BRASS	3
F06	02565014000A	SEAL ASSEMBLY		3
F08	(included in F06)	V-PACKING	NBR/TEXTILE	3
F09	(included in F06)	VACUUM SEAL	NBR	3
F10	0361001100	BOLT	PLATED STEEL	4
F11	0361001140	BOLT	PLATED STEEL	8
F12	0361001110	PIN DOWEL	PLATED STEEL	2
F22	0256501430	SPREADER	BRASS	3
F23	0261001450	WAVE WASHER	STAINLESS	3
F25	9203B15040	O-RING	NBR	3
F32	9203F15029	O-RING	NBR	3
F34	03620032001	MANIFOLD, VALVES	BRASS	1
F40	03620033001	VALVE ASSEMBLY		3
F41	(included in F40)	SEAT	STAINLESS	3
F42	0362003340	PACKING	NBR	3
F43	(included in F40)	DISC	STAINLESS	3
F44	(included in F40)	SPRING	STAINLESS	3
F45	(included in F40)	CAGE	STAINLESS	3
F60	03620038003	VALVE ASSEMBLY		3
F61	(included in F60)	SEAT	STAINLESS	3
F62	0361003340	PACKING	NBR	3
F63	(included in F60)	DISC	STAINLESS	3
F64	(included in F60)	SPRING	STAINLESS	3
F65	(included in F60)	CAGE	STAINLESS	3
P05	0366812010	CRANKCASE	ALUMINUM	1
P07	0366002040	BACK COVER	PLATED STEEL	1
P08	0270102050	GASKET	BONDED PAPER	1
P09	9138A05015	SCREW, PHILLIPS	PLATED STEEL	12
P15	9101B08020	BOLT	STEEL	4
P17	9162B08000	WASHER	STEEL	4
P18	9163F08000	SPRING WASHER	STEEL	4
P25	0090002320	DRAIN-PLUG	POLYAMIDE+GF	2
P26	0090002340	GASKET	NBR	2
P30	02701026001	OIL GAUGE ASSEMBLY	POLYAMIDE	1
P37	0366001730	WATER SLINGER	NBR/FP	1
P40	0220002400	OIL SEAL	NBR	3
P50	03611040101	CRANKSHAFT	STEEL	1
P51	9180630600	BEARING	STEEL	1
P52	9180621000	BEARING, SHAFT	STEEL	1
P54	0613112410	OIL SEAL, BEARING	NBR	1
P55	0180004600	CON-ROD ASSEMBLY	ALUM/STEEL	3
P60	03670047S0	PLUNGER ASSEMBLY		3
P61	0366004860	GUIDE ASSEMBLY	STEEL/STAINLESS	3
P62	03620048S0	PLUNGER	CERAMIC	3
P63	0362004850	SPACER	BRASS	3
P64	012114852	GASKET	COPPER	3
P65	03200049001	PIN, PLUNGER	STEEL	3
P66	9120R05065	BOLT, PLUNGER	STAINLESS	3
P70	0365004420	COVER, BEARING	PLATED STEEL	1
P71	0366004430	COVER, BEARING, SHAFT	ALUMINUM	1
P74	0361004425	O-RING, COVER, BEARING	NBR	1
P80	0350008050	KEY	STEEL	1

* Material listed may be a proprietary version. Parts names without part numbers are only available within complete assemblies.

* Material codes: FP=Flouropolymer, NBR=Medium Nitrile (Buna-N), CFR=Foam Rubber
STAINLESS=Stainless Steel (300 Series)

Exploded View

Model 713



12/05

REF. #	PART NUMBER	PART NAME	MATERIAL	QTY
	30109	RAIL SET, 7 SERIES	PLATED STEEL	1
	30111	VALVE KIT, INLET (F60, F62)	STAINLESS/NBR	1
	30112	VALVE KIT, OUTLET (F40, F42)	STAINLESS/NBR	1
	30121	SEAL KIT 713, (F06, F25)	NBR	1
Recommended Accessories				
	70103	60140 REGULATOR, 15 GPM, 2000 PSI	BRONZE/STAINLESS	1

Horsepower Requirements

Pressure (psi)

713				Pressure (psi)				
	RPM	GPM	LPM	1000	1200	1500	1800	2000
	725	8.0	32.0	5.5	6.6	8.2	9.9	11.0
	900	10.0	39.7	6.8	8.2	10.2	12.3	
	975	11.0	43.0	7.5	9.1	11.3		